

# KING CROSS LIMONE LIMONE SUL GARDA



Limone del Garda is a tourist resort mainly visited by foreigners from March to the end of October. This small, but important Shopping Centre was built in relation to this aspect.

#### Data:

Total Area: 5.535 m<sup>2</sup>  
 Indoor Area: 3.700 m<sup>2</sup>  
 GLA Hypermarket: 506 m<sup>2</sup>  
 GLA Gallery: 1.700 m<sup>2</sup>  
 Shops: 11  
 Parking spaces: 500  
 Mid-size units: 1



#### Location:

The Shopping Centre is connected with the town centre by an easy pedestrian route. The access to its car park is directly from the coastal road, called "Gardesana Occidentale".

# KING CROSS NOAL LUMEZZANE

The Shopping Centre was built within a plan of urban upgrading. Besides the retail area, the building contains offices and apartments and an underground three-storey car park.



#### Data:

Total Area: 5.390 m<sup>2</sup>  
 Indoor Area: 3.750 m<sup>2</sup>  
 GLA Hypermarket: 1.620 m<sup>2</sup>  
 GLA Gallery: 4.822 m<sup>2</sup>  
 Shops: 32  
 Parking spaces: 324  
 Mid-size units: 3

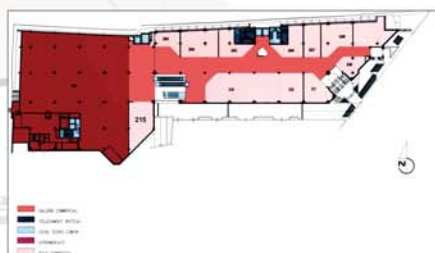


#### Location:

Noal is placed in the heart of the urban centre and it is close to the main street of the town.



Level 0



Level 1



Level 2