



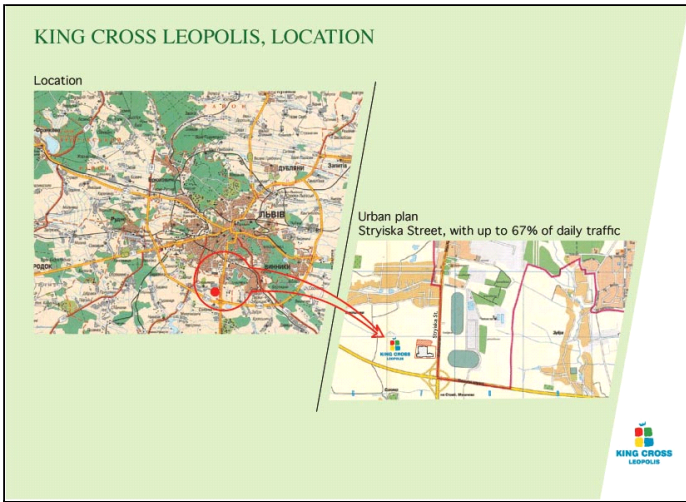
KING CROSS LEOPOLIS is the most recent shopping centre of the group. It was opened in March, 2010.

Location

Lviv, a town of about 800,000 inhabitants, is an important commercial junction by road between Eastern Europe, object of an actual economic growing. KING CROSS LEOPOLIS is localized 7 minutes from the city centre and in the proximity of the city airport, just 10 minutes away.

Road Network

Near to a very busy residential area right next to the main ring roads and Styiska street, one of the main line of traffic, which up to 67% of city traffic travelled daily, KING CROSS LEOPOLIS will have an easily reached position by car and will become a bus terminal. Within 7 minutes from KING CROSS LEOPOLIS there are about 100 000 inhabitants and within 10 minutes about 802 500 inhabitants, nearly almost all the city.



Specifications

- Total Area 89171 m²
- Indoor Area 40892 m²
- GLA Hypermarket 10370 m²
- GLA Mall 50000 m²
- Shops 112
- Parking spaces 1800
- Mid-size units 18

Centre of attraction

Within 7 minutes from KING CROSS LEOPOLIS there are about 100 000 inhabitants and within 10 minutes about 802 500 inhabitants, nearly almost all the city. The population density within 10 km radius is equal to 4,4 inh/sqm, one of the largest in Ukraine, greater than the capital, Kiev (3,16 inh/sqm). The regional catchment basin is estimated of around 1 500 00.